



② 9/68

QTY. FOR DC/EMU/M  
ADDED IN COL.I.

CDA; -Sd.

01	ROUGH CLEANED
18	CHAMFERED
22	CASE HARDENED

(b) 1/68

QTY. FOR ITEM-1 ALTD. FROM  
8 TO 24 & ASSY. DRG. NO.  
EMU/M-3-2-015 ADDED.

CDA: -Sd. 23.1.68.

6/72

MAT. SPEC. & RAW MAT. SIZE  
ALTD. FROM St.C.16.61.,St.C.I  
N4, Ø25 TO St. CL.4, IS:1875(70,  
Ø40 IN REMARKS COL. AND  
CASE HARDENING REMOVED.

CDA: -Sd. 16.5.73.



④ 5/76  
MAT. SPEC. ALTD. FROM ST.CI.4,  
IS:1875(70) TO IS:4855-68  
C14. RM SIZE ALTD. FROM Ø40  
TO Ø25 & CASE HARDENED  
ADDED.  
CDA: -Sd. 25.5.76.

② 2/77  
MAT. SPEC. ALTD. FROM IS:  
4855-68 C14 TO IS:2073-70  
C14 AND IN REMARKS COL.  
Ø25 ALTD. TO Ø28.  
CDA: -Sd. 16.2.77.

① 6/78

NOTE FOR HEAT TREATMENT  
ADDED.

CDA: Sd. 27.6.78.

ALT.	DATE	CHANGES	BY/AP
	16 <sup>7</sup> / <sub>05</sub>	MATL. SPECN. STOCK NO. CHANGED.  ECN. NO. 90600366.	

⑨ 12/83  
MAT & SPEC. ALTD. FROM IS  
2073-70 C14 TO IS:7283-7  
AND IS:4432-67 C14.  
CDA: -Sd 20 12 83

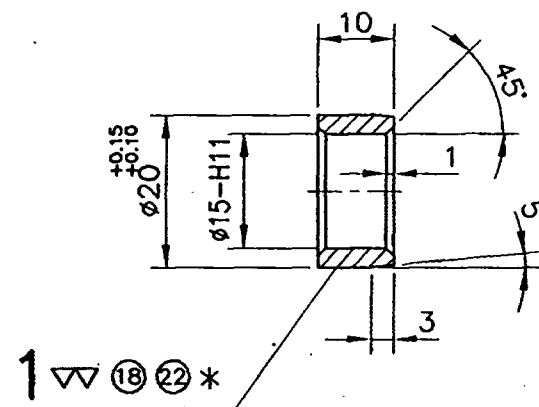
(h) 11/84.  
MAT. SPEC. ALTD. FROM IS:  
7283-74 & 4432-67 C14 T  
IS:7270-74 St.37 TAB.1&2 &  
4432-67 C14.  
CDA: -Sd. 15.11.84.

① 8/92  
NOTE-1 ADDED.  
SD: -Sd. 3.8.92.

(k) 12/98

FOR ITEM-1 REF. DRG. &  
MAT. SPEC. ALTD. FROM IS:  
7270-74 St.37 TAB-1&2 &  
IS:4432-67 C14 TO IS:9550-  
80 TAB-2&Gr.1 & IS:1875-9  
C1.1 RESPY. IN REMARKS CO  
'FROM Ø28' ALTD. TO 'FROM  
Ø25'. NOTE-1 DELETED &  
NOTE-2 ADDED.


SD -Sd. SME/BD  
① 7/2002  
DRG. REDRAWN IN CAD. NOTE  
3 ADDED. GO AND NO GO GA  
GAUGE 6784 DELETED.  
SSE/D 197102 SME/BD



NOTE:

- 1.
2. ALTERNATIVELY NYLON BUSHES TO DRG. NO. EMU/M-3-2-060  
ITEM-8 MAY BE USED.
3. FOR UNTOLERANCED DIMENSIONS REFER DRG. NO. ICF/STD-9-0-001.

▲ EMU/M, DC/EMU/M

▲ EMU/M, DC/EMU/M																																																																																																																																																																																																																																																																																																																																																																																																																																																																																																																																																																																																																																																																																																																																																																																																																																																																																																																																																																																																																																																																																																																																																																																																																																																																																																																																																																																																																																																																																																																																																																																																																																																																																																																																																																																																																							
				48				BUSH				ø20 x ø15 x 10				1				IS:9550-80 TAB-2 Gr.1				IS:1875-92 Cl.I				FROM ø25 <input checked="" type="checkbox"/> R115700025																																																																																																																																																																																																																																																																																																																																																																																																																																																																																																																																																																																																																																																																																																																																																																																																																																																																																																																																																																																																																																																																																																																																																																																																																																																																																																																																																																																																																																																																																																																																																																																																																																																																																																																																																																																											
				No. OFF				DESCRIPTION & DIMENSIONS				ITEM				REF.DRG				MATL.&SPEC.				REMARKS																																																																																																																																																																																																																																																																																																																																																																																																																																																																																																																																																																																																																																																																																																																																																																																																																																																																																																																																																																																																																																																																																																																																																																																																																																																																																																																																																																																																																																																																																																																																																																																																																																																																																																																																																																																															
IV				III				II				I				GROUP: BOGIE BRAKE				SUPERSEDED BY																																																																																																																																																																																																																																																																																																																																																																																																																																																																																																																																																																																																																																																																																																																																																																																																																																																																																																																																																																																																																																																																																																																																																																																																																																																																																																																																																																																																																																																																																																																																																																																																																																																																																																																																																																																																			
																BUSH				SUPERSEDES EMU/M-3-2-042 ALT.k/3																																																																																																																																																																																																																																																																																																																																																																																																																																																																																																																																																																																																																																																																																																																																																																																																																																																																																																																																																																																																																																																																																																																																																																																																																																																																																																																																																																																																																																																																																																																																																																																																																																																																																																																																																																																																			
																				SCALE		SSE		S.N. Nair Mng.																																																																																																																																																																																																																																																																																																																																																																																																																																																																																																																																																																																																																																																																																																																																																																																																																																																																																																																																																																																																																																																																																																																																																																																																																																																																																																																																																																																																																																																																																																																																																																																																																																																																																																																																																																																															
																				1:1		CHD		M. Shondurkern																																																																																																																																																																																																																																																																																																																																																																																																																																																																																																																																																																																																																																																																																																																																																																																																																																																																																																																																																																																																																																																																																																																																																																																																																																																																																																																																																																																																																																																																																																																																																																																																																																																																																																																																																																																															
																						CAD		R. Muralidhar																																																																																																																																																																																																																																																																																																																																																																																																																																																																																																																																																																																																																																																																																																																																																																																																																																																																																																																																																																																																																																																																																																																																																																																																																																																																																																																																																																																																																																																																																																																																																																																																																																																																																																																																																																																															
																						DRN																																																																																																																																																																																																																																																																																																																																																																																																																																																																																																																																																																																																																																																																																																																																																																																																																																																																																																																																																																																																																																																																																																																																																																																																																																																																																																																																																																																																																																																																																																																																																																																																																																																																																																																																																																																																	
																				ALT.		1																																																																																																																																																																																																																																																																																																																																																																																																																																																																																																																																																																																																																																																																																																																																																																																																																																																																																																																																																																																																																																																																																																																																																																																																																																																																																																																																																																																																																																																																																																																																																																																																																																																																																																																																																																																																	
																				CAD FILE: C:\MD-CAD\089\3-2\042-SL03.DWG								INTEGRAL COACH FACTORY CHENNAI - 600 038																																																																																																																																																																																																																																																																																																																																																																																																																																																																																																																																																																																																																																																																																																																																																																																																																																																																																																																																																																																																																																																																																																																																																																																																																																																																																																																																																																																																																																																																																																																																																																																																																																																																																																																																																																																											
																				DATA CODE NO:				INDIAN RAILWAY				SHEET																																																																																																																																																																																																																																																																																																																																																																																																																																																																																																																																																																																																																																																																																																																																																																																																																																																																																																																																																																																																																																																																																																																																																																																																																																																																																																																																																																																																																																																																																																																																																																																																																																																																																																																																																																																											
																				089				STANDARDS				1 OF 1				EMU/M-3-2-042																																																																																																																																																																																																																																																																																																																																																																																																																																																																																																																																																																																																																																																																																																																																																																																																																																																																																																																																																																																																																																																																																																																																																																																																																																																																																																																																																																																																																																																																																																																																																																																																																																																																																																																																																																																							